

Village of Harrison Hot Springs - February 1, 2024 Fall 2022 ETF Bike Trail Survey Report:



Executive Summary

This 6-kilometer looping section of the ETF trail starts at the entrance to the Village of Harrison Hot Springs and goes northward along bike lane like wide shoulders to the beach at Harrison Lake. The trail then transitions onto wide Lillooet Road and Eagle Street and onto a newly mixed-use gravel path along McComb Drive. Signage along with some shoulder and bike lane improvements would enhance this already great section of trail. The touristy nature of Harrison Hot Springs also makes it a likely spot to start and end the ETF trail rather than continuing on to Hope on the Lougheed Highway.

Trail Quality Assessment Methodology

- Trail quality is both objective and subjective. Attributes such as trail width and surface type are easily measured, but rider comfort or scenic quality are harder to measure. Primarily the trail was developed to be beside or in view of the Fraser River and allow for a contiguous route from the mouth of the Fraser River to Hope.
- The trail route was developed from a number of sources including; GIS data from the Regional District's 2010 planning projects, Community meetings over 2021, Published Community Cycling Maps, Open Street Map, Google Maps, and the Fall Bike Route Survey (1238 Data Locations and 2000+ Photos captured).
- Trail Quality Classification Methodology

Ideal Trail: scenic, paved, wide, separate from walkers and cars (includes bike lanes separated from road traffic by a barrier)	10	Ideal Road: scenic, well-marked bike lanes, room to bike, minor road	5
Poor Scenic Characteristics	-1	Poor Scenic Characteristics	-1
Gravel	-1	No Bike Lane Lines/markers	-1
Narrow, not enough for two bikes	-1	No Shoulder	-1
Speed limitations, pedestrian area	-1	Major Road/Heavy Traffic	-1

Trail Survey: General Recommendations and Conclusions

- As a general rule place trail signs before intersections or viewable from a far enough distance for a bike rider to see before turning.
- In most cases use of a larger pole mounted 22x34 cm sign with a directional arrow is recommended. Smaller wood post mounted signs 12.7x19.7 cm and signs without directional arrows should only be used for confidence markers where the route is obvious

Summary of Current Trail: Village of Harrison Hot Springs

- Section Length **6 km**
- 8 Signs Needed Locations: 16 signs** recommended
- 2 Potential Enhancement Projects Identified, 1 Map Sites** recommended
- Length of Trail (km) by Class**

TRAIL	km	ROAD	km
Ideal Trail 10	0	Ideal Road 5	0
Class 9	0	Class 4	2.7
Class 8	1.7	Class 3	1.3
Class 7	0	Class 2	.4
Class 6	0	Class 1	0



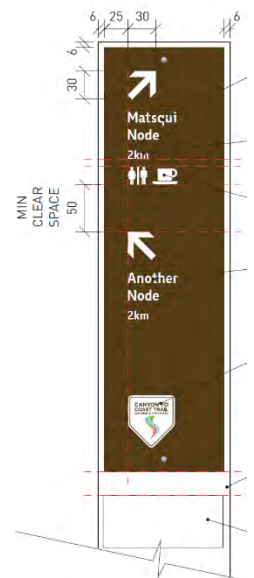
Map Linked Signage Details

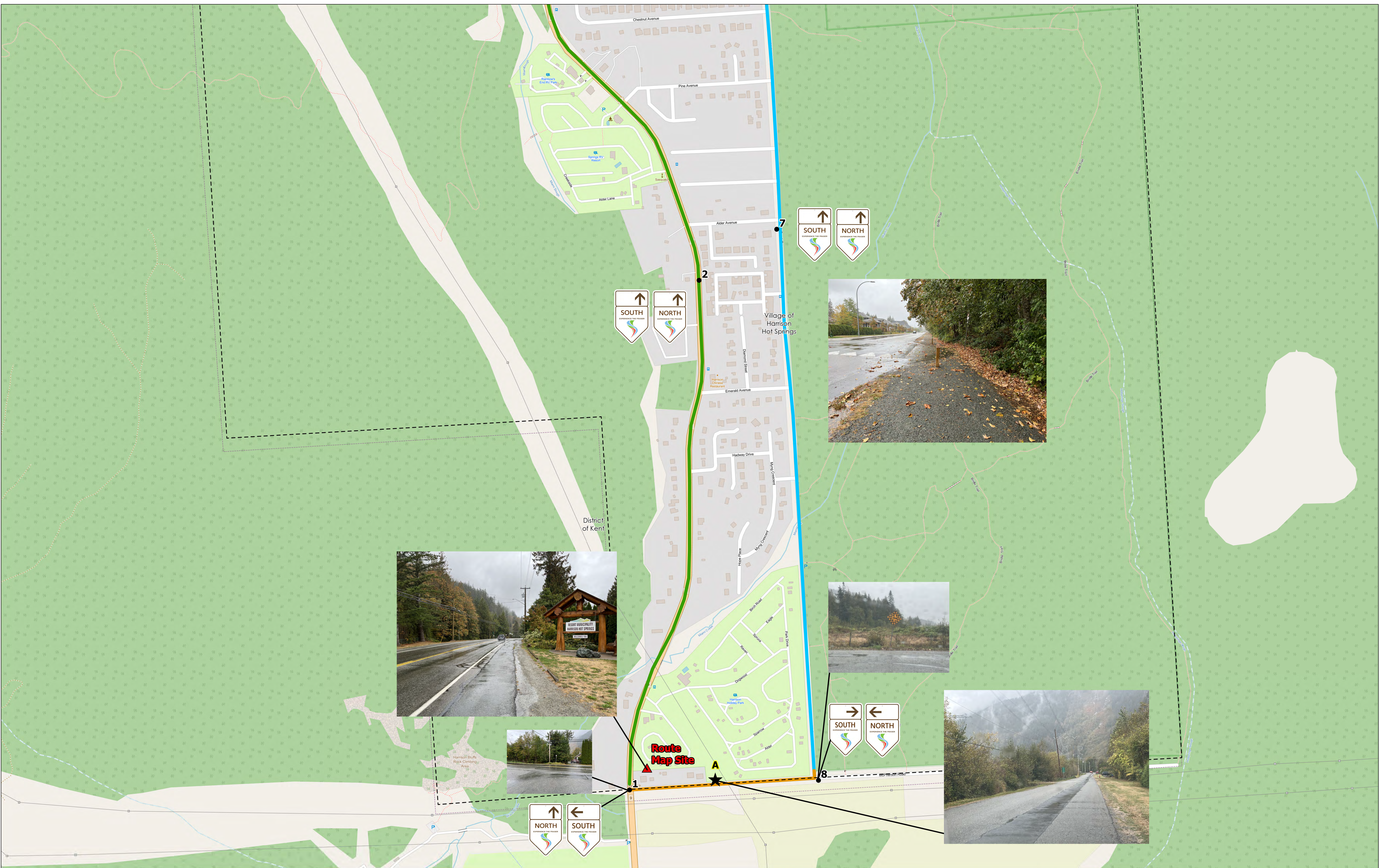
- Sign types recommended at each location are shown on the map and labelled numerically. Some sign locations require detailed explanations. Those sign details are listed here.
- **Sign Location 1:** Entry to Harrison hear there is a no parking pole on west side of the street to use for left south and up north signs. Suggest using road in and trail on McComb drive out. This is a loop so it makes sense to also add a detailed map here to give riders a choice.
- **Sign Location 2:** Good location needs to be identified but trail reminder along the shoulders would be warranted.
- **Sign Location 3:** Major intersection need signs both sides. Most riders will likely proceeded to the water and then rejoin the trail here when continuing route
- **Sign Location 4:** Easy to get lost here. Eagle Street is a minor street and continuing along Lillooet is tempting. There is also the Miami River Greenway which is not recommended. The Stop sign on Eagle St. could be used or a new pole installed. It needs to be obvious.
- **Sign Location 5:** Need to keep riders on Eagle stay straight signs on any of the poles. 50 Km/hr sign could work for straight south sign.
- **Sign Location 6:** Start of new gravel path. Unsure about making the Miami Greenway part of the route. The trail is narrow, recommend using Eagle Street.
- **Sign Location 7:** Good wood posts for arrow signs, maybe one set along this gravel trail.



Map Linked Potential Project Details

- Potential projects were identified while riding on the trail and are mainly focused on improvements to the route.
- **Potential Project A:** This section of the trail is the worst in the loop as there are no shoulders on the road. Adding paved shoulders or a bike lane would improve this section.
- **Potential Project B:** Starting on Lillooet then onto Eagle Street this wide section would be a good place to add bike lanes with lines on the street.





Experience The Fraser Fall 2022 Bike Trail Survey Map

Signs and Potential Projects

Village of Harrison Hot Springs: Map 1 of 2

★ Potential Project Site

▲ Potential Site for Detailed Map

● Sign Existing

● Sign Needed

Route Class

- 10 Trail
- 9 Trail
- 8 Trail
- 7 Trail
- 6 Road
- 5 Road
- 4 Road
- 3 Road
- 2 Road
- 1 Road

Municipal Boundaries

North South on Signs indicate general direction of travel!

← EAST

→ WEST

0 25 50 100 150 200 Metres

The Map Data may contain inaccurate or incomplete information due to the passage of time, changing circumstances, sources used and the nature of collecting comprehensive geographic data, any of which may lead to incorrect results. This Map Data is provided to client "as is," and client agrees to use it at its own risk. This product is for informational purposes and may not have been prepared for or be suitable for legal, engineering, or surveying purposes.

Map data © OpenStreetMap contributors, Microsoft, Facebook, Inc. and its affiliates, Esri Community Maps contributors, Map layer by Esri

Date Exported: 2023-05-31 2:23 PM

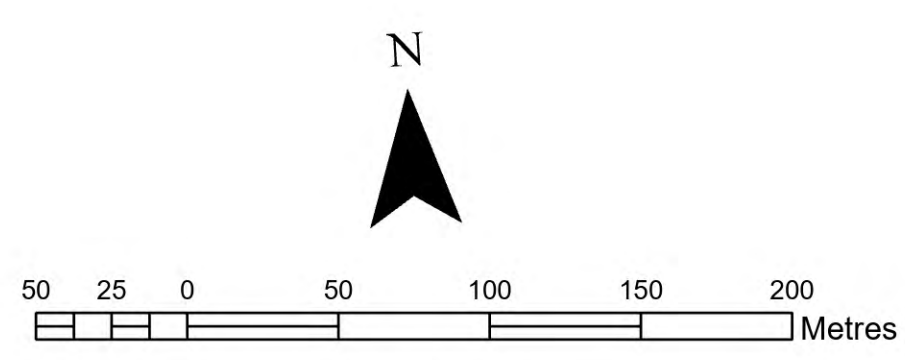
Path: C:\GIS\ETP\Harrison\Harrison.aprx



Experience The Fraser Fall 2022 Bike Trail Survey Map
Signs and Potential Projects
Village of Harrison Hot Springs: Map 2 of 2

- ★ Potential Project Site
- ▲ Potential Site for Detailed Map
- Sign Type
 - Sign Existing
 - Sign Needed
- Route Class
 - 10 Trail
 - 9 Trail
 - 8 Trail
 - 7 Trail
 - 6 Trail
 - 4 Road
 - 3 Road
 - 2 Road
 - 1 Road
- Municipal Boundaries

North South on Signs
indicate general
direction of travel!



The Map Data may contain inaccurate or incomplete information due to the passage of time, changing circumstances, sources used and the nature of collecting comprehensive geographic data, any of which may lead to incorrect results. This Map Data is provided to client "as is," and client agrees to use it at its own risk. This product is for informational purposes and may not have been prepared for or be suitable for legal, engineering, or surveying purposes.

Map data © OpenStreetMap contributors, Microsoft, Facebook, Inc. and its affiliates, Esri Community Maps contributors, Map layer by Esri

Date Exported: 2023-05-31 2:53 PM

Path: C:\GIS\ETP\Harrison\Harrison.aprx

